



Display Tune®

Theft Deterrence Asset Control Product Overview

Theft Deterrence Features:

- Unique patented logic to deter theft of the display
- Fully compatible plug-in utility for Display Tune
- Deters unauthorized third-party removal or theft of display
- Personal Identification Number (PIN) locks the display to the host computer
- Theft timer value and PIN are user configurable
- Theft timer is initiated when the display cable and power are detached from the display
- Unauthorized removal triggers unfavorable view mode and sets display to minimal operability
- Deactivation mode for temporary relocation of display
- Compatible with the leading Windows® graphic cards
- Supports VGA and DVI display interfaces
- Supports Windows XP, Windows Vista, Windows 7.

Protect your Investment with Display Tune Theft Deterrence

What do large enterprises, small offices, institutions and end-users in homes share in common? They all want to protect their computer equipment investment assets.

Let's consider computer displays. Flat panel displays – with their sleek thin design, small footprint, and elegant ergonomics – have surpassed CRT technology as the leading desktop monitor solution. But with their popularity, flat panel displays have become an ideal target for unauthorized removal or theft.

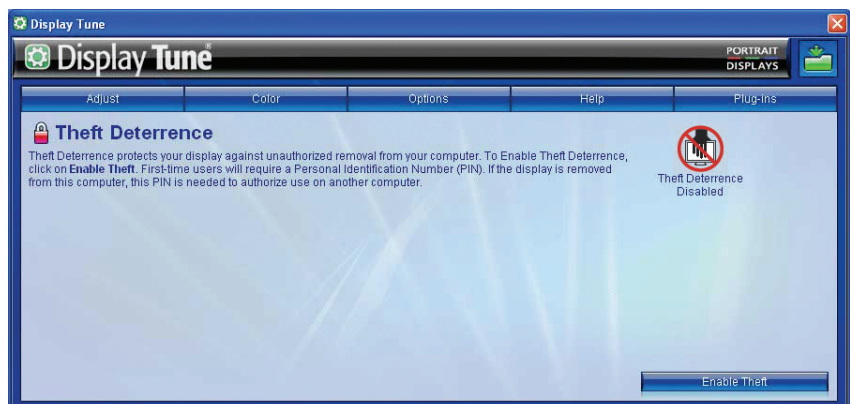
Display Tune Theft Deterrence plug-in provides an effective software lock mechanism to deter the potential unauthorized removal of flat panel displays. It's easy to set up and use. Simply install the Theft Deterrence plug-in from within Display Tune, pick a Personal Identification Number (PIN) and set the theft timer value.

The theft timer value determines how long the display operates normally after an unauthorized removal or theft is detected, such as when the display is moved from the host computer to another location.

Once this theft detection is activated, Display Tune Theft Deterrence automatically generates an alert warning message on the display and requests the user to input their unique PIN.

Entering the correct PIN restores the display to normal operation, while an incorrect PIN entry (or no PIN entry after a user definable time lapse) causes the display to render an inverted color ramp or gray scale content – impractical viewing conditions for the unauthorized user.

But don't worry. Normal operation can be restored once the display is back in the hands of an authorized user. Protect your display and investment now with Display Tune Theft Deterrence.



Theft Deterrence Plug-in Interface.



The Theft Deterrence label is prominently displayed on monitors that are Theft-Deterrence enabled.

What happens to a theft-enabled display when it is removed from the host computer?

Portrait Displays' patented, unique Theft Deterrence mode is activated when the following two conditions exist at the same time: (1) power cord is disconnected, and (2) monitor cable is disconnected. This follows the assumption that a theft or an unauthorized relocation will occur after the power cord and monitor cable are disconnected so that the display can be removed from its current location. Once these two conditions are met, theft deterrence logic is initiated. The next time the display is powered up, a user-definable clock begins a countdown sequence. During the countdown sequence, the user must enter a valid PIN within Display Tune. Failure to enter a valid PIN before the completion of the countdown places the display into an unfavorable viewing mode.

How does Theft Deterrence prevent my display from being stolen?

Theft Deterrence does not prevent the display from being stolen. A label on the monitor alerts the unauthorized user that the display is theft enabled. The display can still be removed, but the display image is put into an unfavorable view that severely limits the display's usefulness. The display will continue to operate in this mode until the user enters in the correct PIN through Display Tune.

Once Theft Deterrence is enabled, can it be disabled?

Theft Deterrence can be enabled or disabled from within the Display Tune user interface. Selecting the Theft Deterrence module from the Display Tune Plug-In tab provides all the necessary instructions for managing a theft-enabled display. The user can enable/disable theft, change the PIN of the display, change the duration of time before the display enters unfavorable view mode, and deactivate theft when moving the display from one computer to another.

Why is the display set to an unfavorable view instead of inoperable?

Unfavorable view still provides some level of functionality for the display. This would allow for the user to move the display to another system that does not have Display Tune and still use the display after the theft timer value reaches zero. The display's image will be put into a mode that is less desirable, such as inverting the color ramps or placing the display into gray scale only. The user may require some minimal visual performance after moving the display from the host. Rendering the display inoperable after count down prevents the user from recovering from catastrophic event that may have placed the display into theft mode.

How do I know if my display is Theft Deterrence ready?

The theft deterrence label will be prominently displayed on the display. This indicates that the display is Theft Deterrence Enabled and that removing the display will initiate theft deterrence mode.

Corporate Headquarters:

Portrait Displays, Inc.

6663 Owens Dr., Pleasanton, CA 94588

Phone: 925-227-2700 Fax: 925-227-2705

www.portrait.com

PORTRAIT

DISPLAYS
SOFTWARE FOR DISPLAYS

Specifications subject to change without notice. Display Tune is a registered trademark of Portrait Displays, Inc. Windows is a registered trademark of Microsoft Corp. All other trademarks are property of their respective holders. © 2009 Portrait Displays, Inc. All rights reserved.